



## Hinton Road, Uxbridge, UB8 2DL

- Two Double Bedrooms
- Filled With Natural Light
- Bay Windows
- Large Kitchen
- On Road Parking
- Stunning Rear Garden
- Repainted & Very Well Presented
- New Window Dressings
- Downstairs Bathroom
- EPC Rating - E

**£2,200 PCM**



Cameron Estate Agents  
195 High Street,  
Middlesex, Uxbridge, UB8 1LB

E: [uxbridge@cameron.co](mailto:uxbridge@cameron.co)  
T: 01895252000

[www.cameron.co](http://www.cameron.co)

Whilst every care has been taken to ensure the accuracy of these particulars, none of the statements contained herein are to be relied upon as representations of fact. These particulars do not constitute an offer or contract.

**Description**

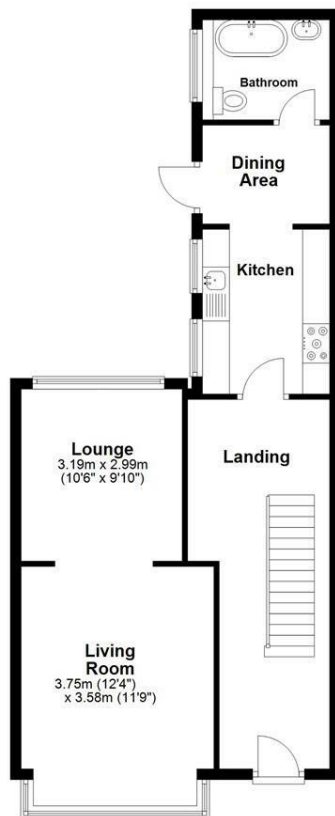
Cameron are delighted to offer this three bedroom semi-detached house on a highly sought after road in Uxbridge, Hinton Road. Offered to the market for the first time, this family home offers character throughout with large bay-windows. Briefly comprising; an entrance hallway with under-stair storage, two beautiful reception rooms filled with natural light. A downstairs kitchen with white goods leading to a family bathroom to the ground floor. To the first floor a large master bedroom, double second bedroom and third bedroom which is ideal for a child's room or home office. There is also a shower-room with toilet to the upstairs. This property also offers a well maintained private garden with patio area perfect for entertaining during summer evenings. Offered to the market unfurnished and available to move-in from October 2025 - Call to arrange your viewing.

**IMPORTANT NOTICE**

These particulars have been prepared upon information supplied by the Vendor and should be verified by your surveyors and solicitors. In accordance with the Property Misdescriptions Act 1991 we have prepared these sales particulars as a general guide to give a broad description of the property. They are not intended to constitute part of an offer or contract. We have not carried out a structural survey and the services, appliances and specific fittings have not been tested. All photographs, measurements, floor plans and distances referred to are given as a guide only and should not be relied upon for the purchase of carpets or any other fixtures or fittings. Lease details service charge and ground rent (where applicable) are given as a guide only and should be checked and confirmed by your solicitor prior to exchange of contract

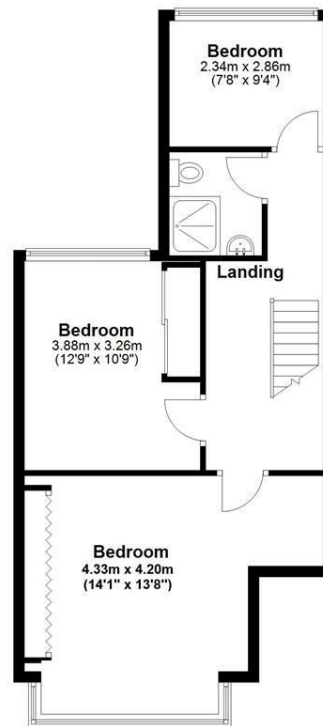
### Ground Floor

Approx. 52.6 sq. metres (566.6 sq. feet)



### First Floor

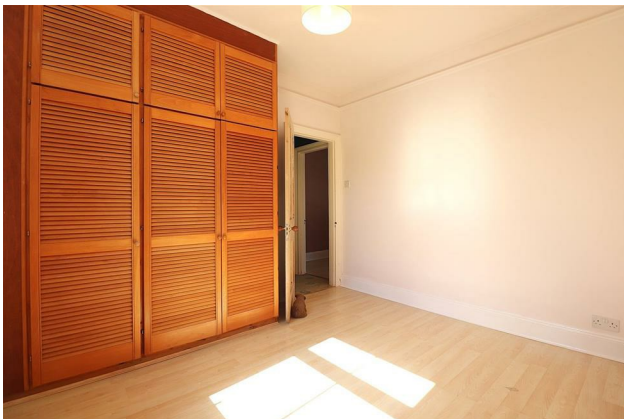
Approx. 53.1 sq. metres (571.7 sq. feet)



Total area: approx. 105.8 sq. metres (1138.3 sq. feet)



# Cameron



Whilst every care has been taken to ensure the accuracy of these particulars, none of the statements contained herein are to be relied upon as representations of fact. These particulars do not constitute an offer or contract.